



← All Apps Documents Web Settings Folders Photos ▶ V ...

Best match

 ArcMap 10.8.2
App

Search the web

- arcmap - See more search results >
- arcmap 10.8 >
- arcmap download >
- arcmap 10.4 >
- arcmap gis >
- arcmap online >
- arcmap pro >
- arcmap download free >
- arcmap 10 >
- arcmap 10.8 download >

 ArcMap 10.8.2
App

- Open
- Run as administrator
- Open file location
- Unpin from taskbar
- Pin to Start
- Uninstall

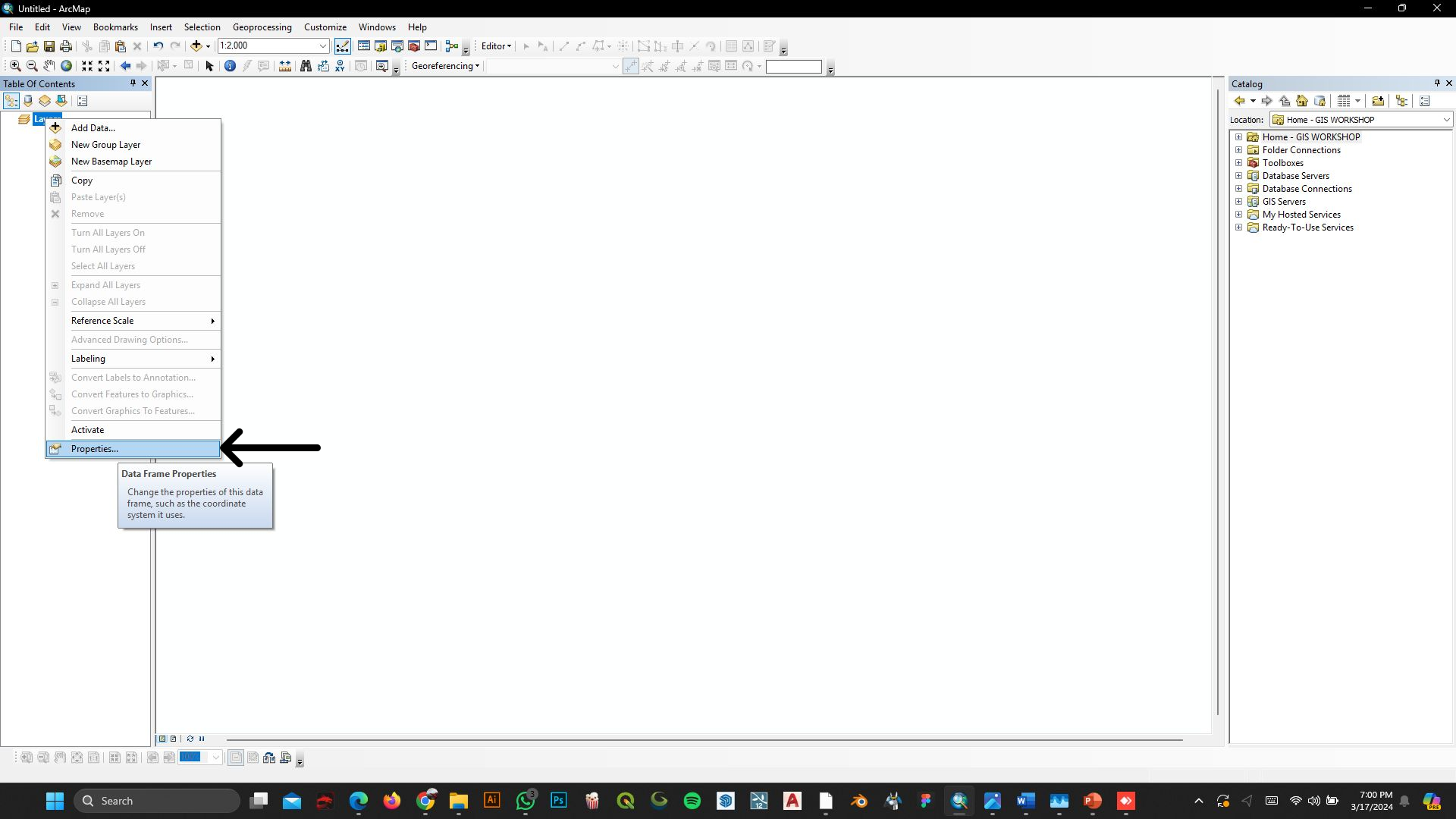


- 3D Analyst
- Advanced Editing
- Animation
- ArcScan
- COGO
- Data Driven Pages
- Data Frame Tools
- Distributed Geodatabase
- Draw
- Edit Vertices
- Editor
- Effects
- Feature Cache
- Feature Construction
- Geocoding
- Geodatabase History
- Geometric Network Editing
- Georeferencing
- Geostatistical Analyst
- GPS
- Graphics
- Image Classification
- Labeling
- LAS Dataset
- Layout
- Network Analyst
- OpenStreetMap
- Parcel Editor
- Publisher
- Raster Painting
- Representation
- Route Editing
- Schematic
- Schematic Editor
- Schematic Network Analyst
- Snapping
- Spatial Adjustment
- Spatial Analyst
- Standard
- Tablet
- TIN Editing
- Tools
- Topology
- Tracking Analyst
- Transform Parcels



Open the Table of Contents window to work with your map's contents.

F1 for more help.



- Add Data...
- New Group Layer
- New Basemap Layer
- Copy
- Paste Layer(s)
- Remove
- Turn All Layers On
- Turn All Layers Off
- Select All Layers
- Expand All Layers
- Collapse All Layers
- Reference Scale
- Advanced Drawing Options...
- Labeling
- Convert Labels to Annotation...
- Convert Features to Graphics...
- Convert Graphics To Features...
- Activate
- Properties...

Data Frame Properties
Change the properties of this data frame, such as the coordinate system it uses.

Catalog

Location: Home - GIS WORKSHOP

- Home - GIS WORKSHOP
- Folder Connections
- Toolboxes
- Database Servers
- Database Connections
- GIS Servers
- My Hosted Services
- Ready-To-Use Services

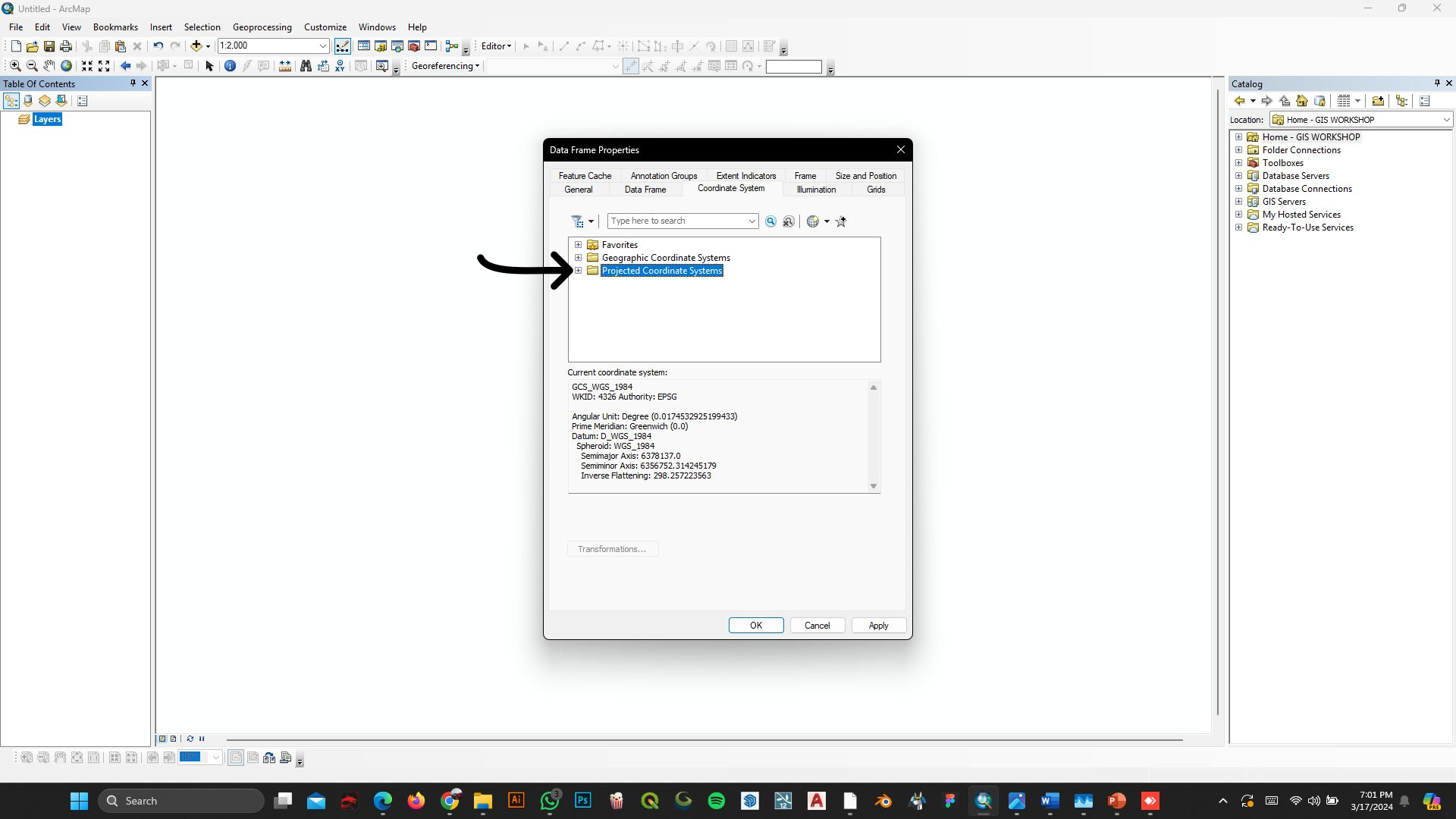




Table Of Contents



Data Frame Properties

Feature Cache |
 Annotation Groups |
 Extent Indicators |
 Frame |
 Size and Position

General |
 Data Frame |
 Coordinate System |
 Illumination |
 Grids

- National Grids
- Oceans
- Polar
- State Plane
- State Systems
- Tribal
- UTM**
- World
- World (Sphere-based)

Current coordinate system:

GCS_WGS_1984
 WKID: 4326 Authority: EPSG

Angular Unit: Degree (0.0174532925199433)
 Prime Meridian: Greenwich (0.0)
 Datum: D_WGS_1984
 Spheroid: WGS_1984
 Semimajor Axis: 6378137.0
 Semiminor Axis: 6356752.314245179
 Inverse Flattening: 298.257223563

Transformations...

|
 |

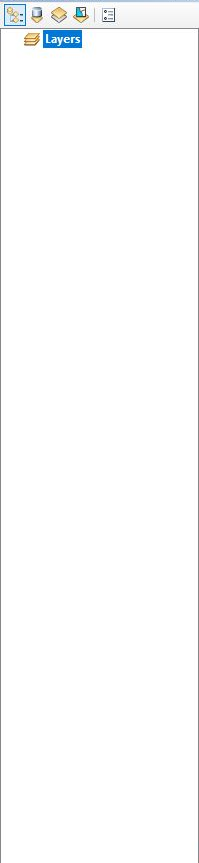


Catalog





Table Of Contents



Data Frame Properties

Feature Cache | Annotation Groups | Extent Indicators | Frame | Size and Position

General | Data Frame | Coordinate System | Illumination | Grids

Type here to search

- NAD 1983
- New Zealand
- North America
- Oceans
- South America
- WGS 1972
- WGS 1984**
- World
- World (Sphere-based)

Current coordinate system:

GCS_WGS_1984
 WKID: 4326 Authority: EPSG

Angular Unit: Degree (0.0174532925199433)
 Prime Meridian: Greenwich (0.0)
 Datum: D_WGS_1984
 Spheroid: WGS_1984
 Semimajor Axis: 6378137.0
 Semiminor Axis: 6356752.314245179
 Inverse Flattening: 298.257223563

Transformations...

OK Cancel Apply



Catalog





Table Of Contents

Layers

Data Frame Properties

Feature Cache | Annotation Groups | Extent Indicators | **Frame** | Size and Position

General | **Data Frame** | Coordinate System | Illumination | Grids

Type here to search

- North America
- Oceans
- South America
- WGS 1972
- WGS 1984
- Northern Hemisphere**
- Southern Hemisphere
- World
- World (Sphere-based)

Current coordinate system:

GCS_WGS_1984
WKID: 4326 Authority: EPSG

Angular Unit: Degree (0.0174532925199433)
Prime Meridian: Greenwich (0.0)
Datum: D_WGS_1984
Spheroid: WGS_1984
Semimajor Axis: 6378137.0
Semiminor Axis: 6356752.314245179
Inverse Flattening: 298.257223563

Transformations...

OK Cancel Apply

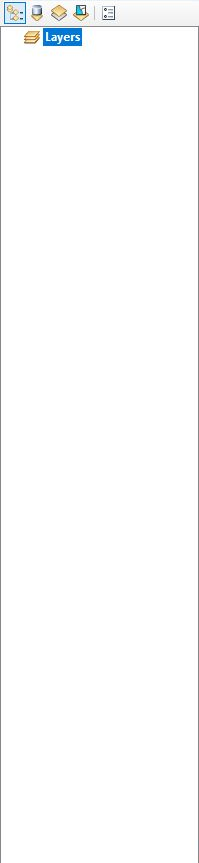
Catalog

Location: Home - GIS WORKSHOP

- Home - GIS WORKSHOP
- Folder Connections
- Toolboxes
- Database Servers
- Database Connections
- GIS Servers
- My Hosted Services
- Ready-To-Use Services



Table Of Contents



Data Frame Properties

Feature Cache | Annotation Groups | Extent Indicators | Frame | Size and Position

General | **Data Frame** | Coordinate System | Illumination | Grids

Type here to search

- WGS 1984 UTM Zone 37N
- WGS 1984 UTM Zone 38N
- WGS 1984 UTM Zone 39N
- WGS 1984 UTM Zone 40N
- WGS 1984 UTM Zone 41N
- WGS 1984 UTM Zone 42N
- WGS 1984 UTM Zone 43N**
- WGS 1984 UTM Zone 44N
- WGS 1984 UTM Zone 45N

Current coordinate system:

WGS_1984_UTM_Zone_43N
 WKID: 32643 Authority: EPSG

Projection: Transverse_Mercator
 False_Easting: 500000.0
 False_Northing: 0.0
 Central_Meridian: 75.0
 Scale_Factor: 0.9996
 Latitude_Of_Origin: 0.0
 Linear Unit: Meter (1.0)

Transformations...

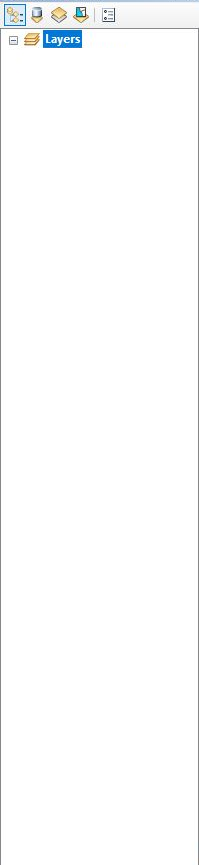
OK Cancel Apply

Catalog





Table Of Contents



Data Frame Properties

Feature Cache Annotation Groups Extent Indicators Frame Size and Position
General Data Frame Coordinate System Illumination Grids

Name: Layers

Description:

Credits:

Units

Map: Meters

Display: **Decimal Degrees**

Tip: See add Unknown Units
Inches
Points
Feet
Yards
Miles

Reference Scale: Nautical Miles
Millimeters
Centimeters

Rotation: Meters

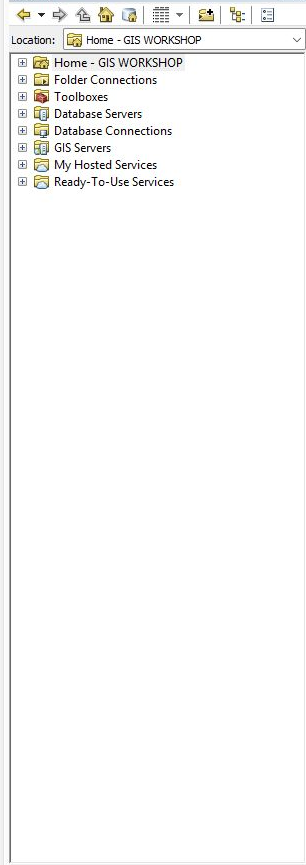
Label Engine: Kilometers
Decimal Degrees
Decimeters

Simulate Meters
 Allow assume Degrees Minutes Seconds
Degrees Decimal Minutes
MGRS
U.S. National Grid
UTM

OK Cancel Apply



Catalog



Layers

Open the Catalog window to access and manage your data.
Press F1 for more help.

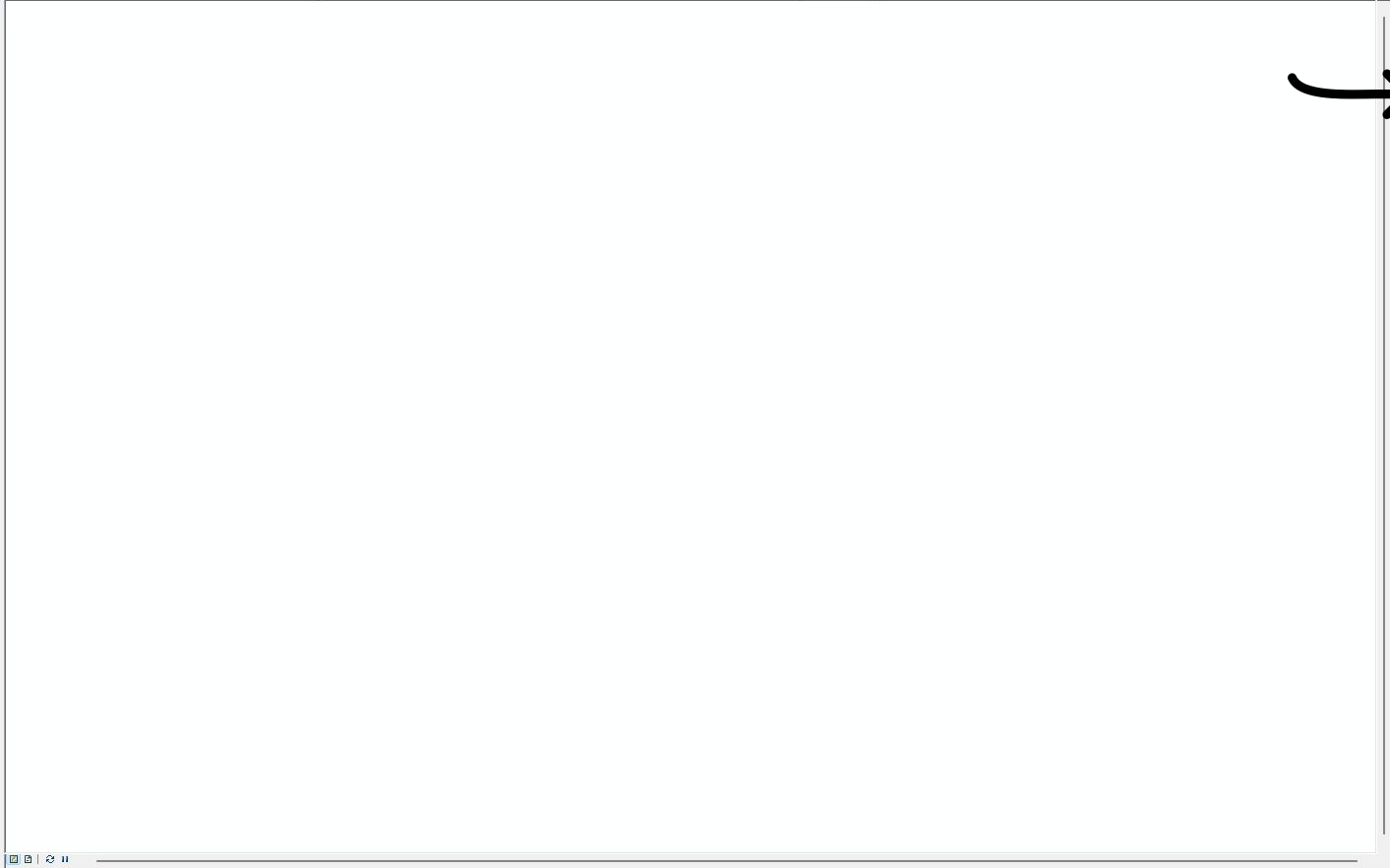
1:2,609,664,693

Editor

Georeferencing

Table Of Contents

Layers



Catalog

Location: Folder Connections

- Home - Documents\ArcGIS
- Folder Connections
- Toolboxes
- Database Servers
- Database Connections
- GIS Servers
- My Hosted Services
- Ready-To-Use Services



Standard toolbar icons for map navigation and editing.

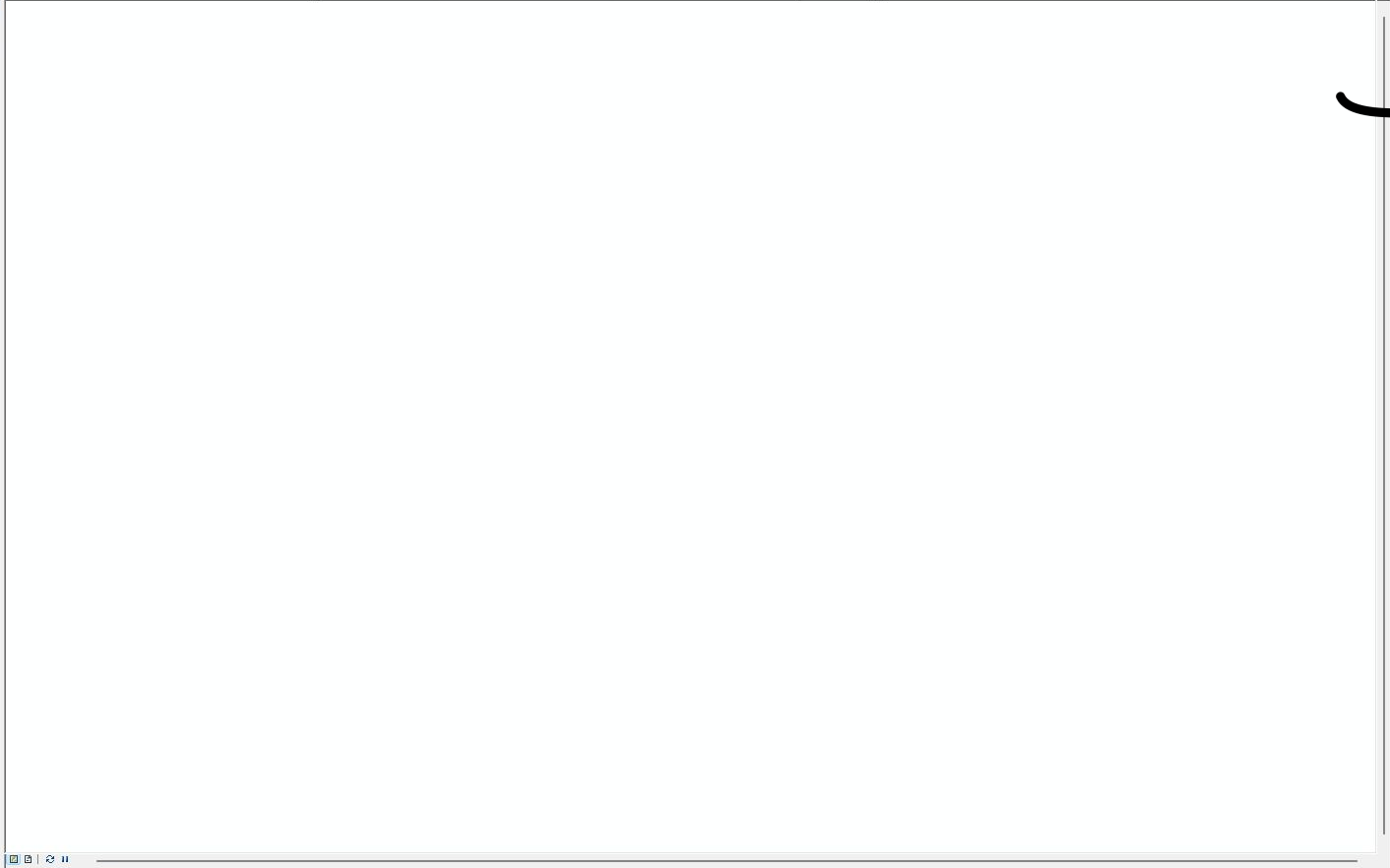
1:2,609,664,693

Editor

Georeferencing

Table Of Contents

Layers



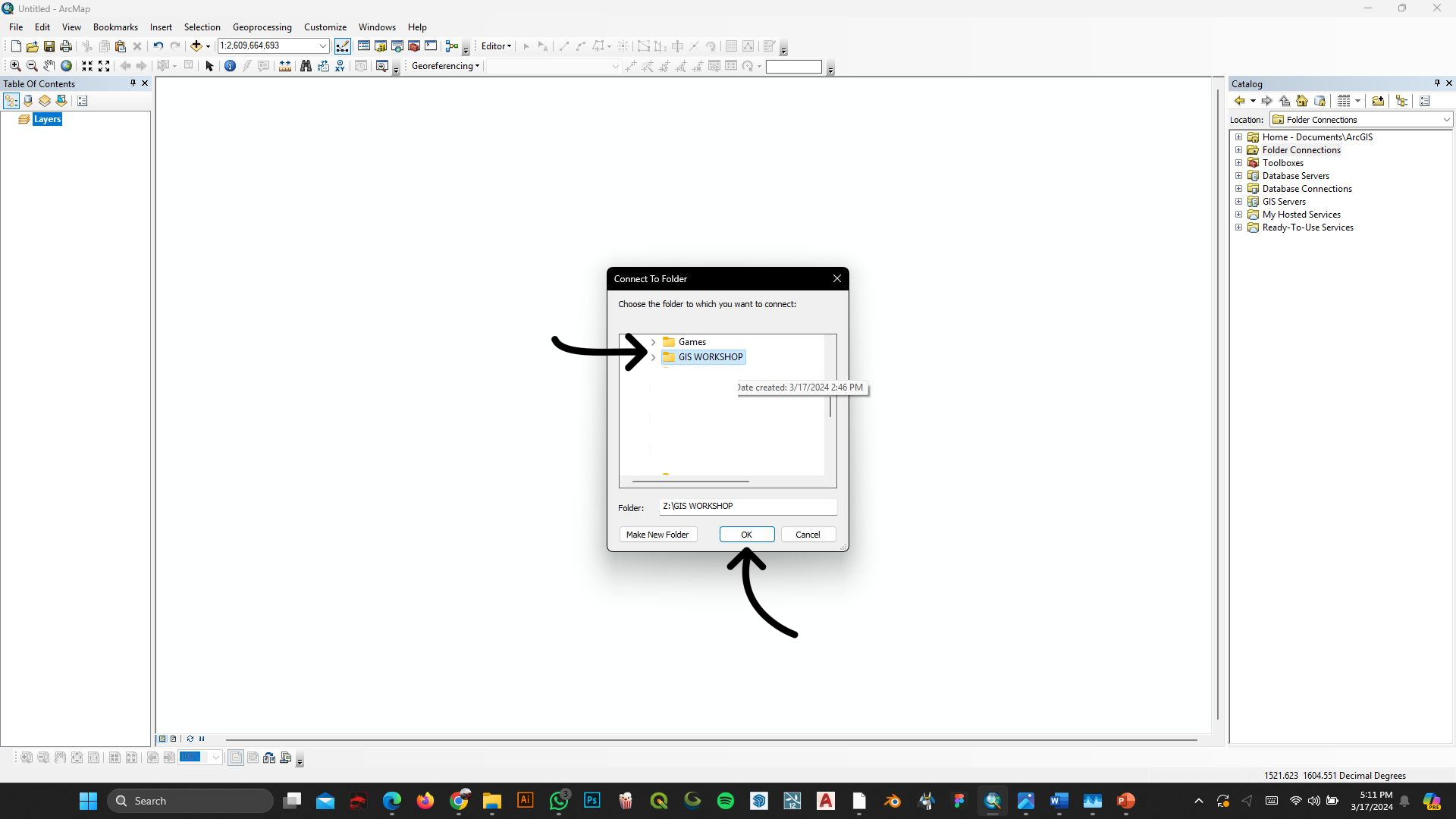
Catalog

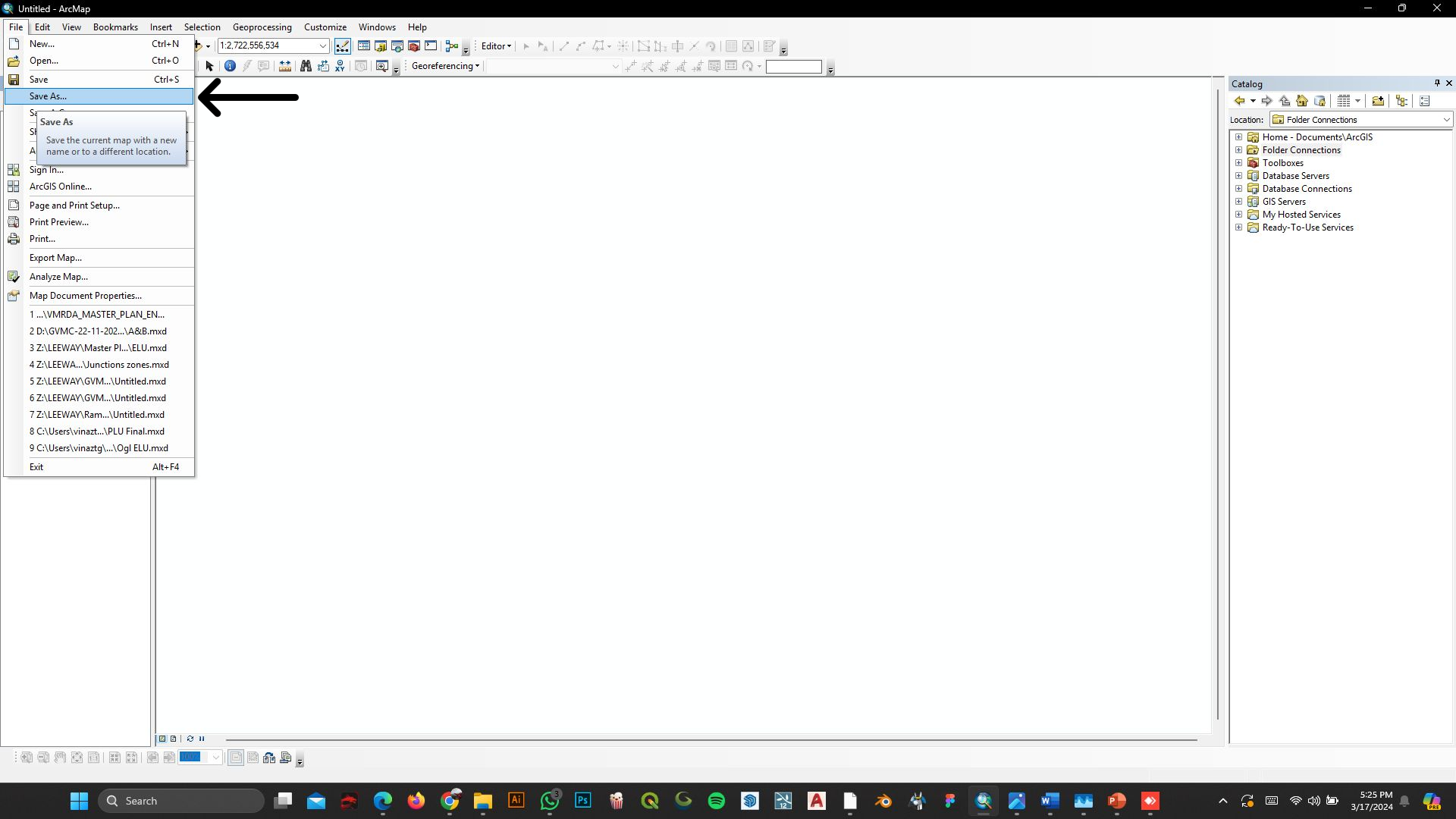
Location: Folder Connections

- Home - Documents\ArcGIS
- Folder Connections**
 - Connect To Folder...
- Disconnected
- GIS Server
- My Hosts
- Ready-To-Go

Connect To Folder
Connect to a folder or disk drive so you can work with its contents in the Catalog.

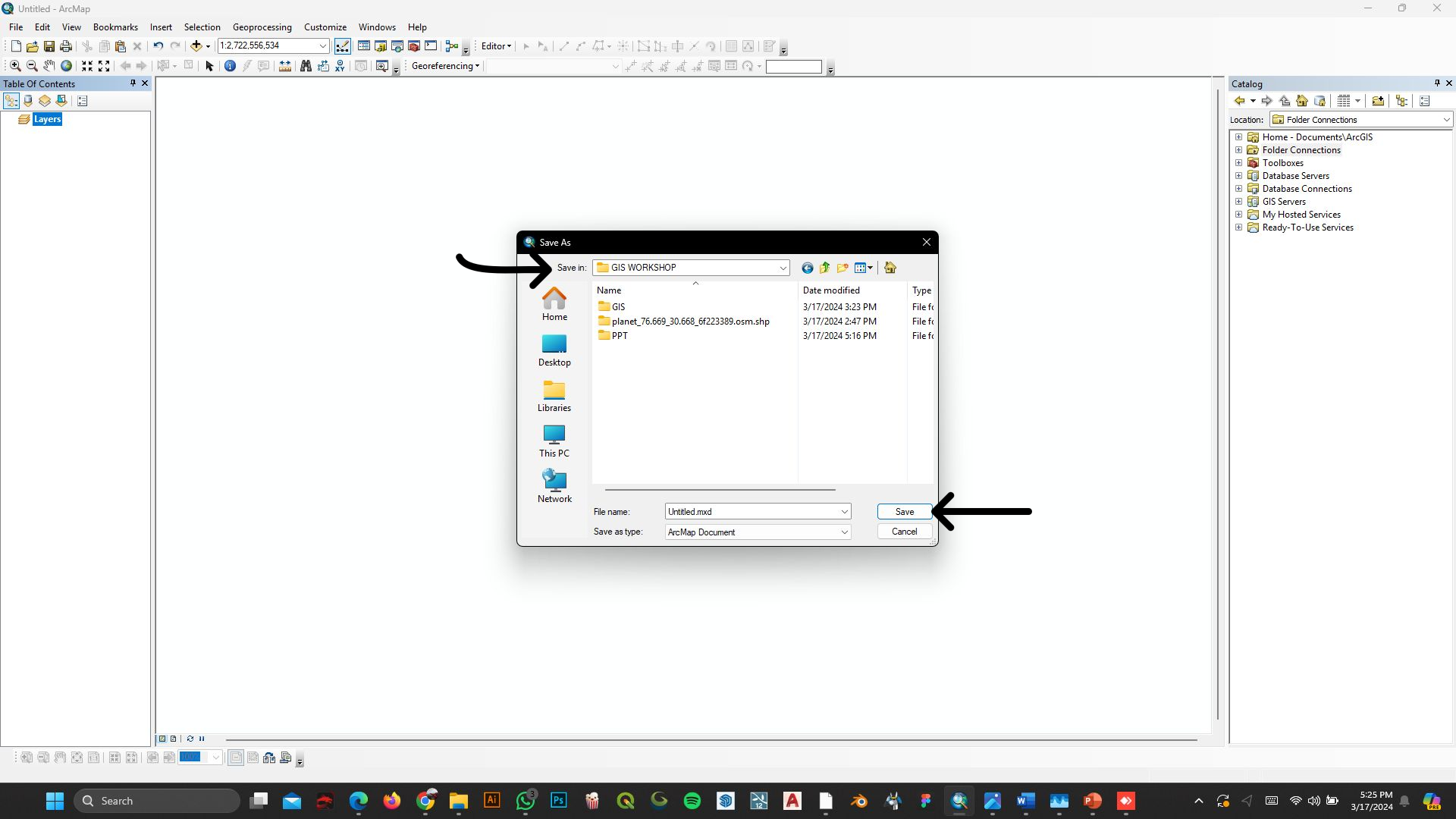






- File
 - Edit
 - View
 - Bookmarks
 - Insert
 - Selection
 - Geoprocessing
 - Customize
 - Windows
 - Help
- 1:2,722,556,534
- Editor
- Georeferencing
- Save As...
- Save As
- Save the current map with a new name or to a different location.
- Sign In...
- ArcGIS Online...
- Page and Print Setup...
- Print Preview...
- Print...
- Export Map...
- Analyze Map...
- Map Document Properties...
- 1 ...VMRDA_MASTER_PLAN_EN...
- 2 D:\GVMC-22-11-202...A&B.mxd
- 3 Z:\LEEWAY\Master PL...\ELU.mxd
- 4 Z:\LEEWAY\Junctions zones.mxd
- 5 Z:\LEEWAY\GVM...\Untitled.mxd
- 6 Z:\LEEWAY\GVM...\Untitled.mxd
- 7 Z:\LEEWAY\Ram...\Untitled.mxd
- 8 C:\Users\vinaztg...\PLU Final.mxd
- 9 C:\Users\vinaztg...\Ogl ELU.mxd
- Exit Alt+F4


- Catalog
- Location: Folder Connections
- Home - Documents\ArcGIS
 - Folder Connections
 - Toolboxes
 - Database Servers
 - GIS Servers
 - My Hosted Services
 - Ready-To-Use Services





The toolbar contains various icons for map navigation and editing. A black arrow points to the 'Add Data...' button, which is highlighted in blue. To the right of the toolbar is a search bar with the text '1:2,609,664,693' and a 'Georeferencing' dropdown menu.

Table Of Contents



The Table Of Contents panel is currently empty, showing only a 'Layers' folder icon.

Add Data...

Add Data

Add new data to the map's active data frame.

Tip: You can also drag data into your map from the Catalog window.

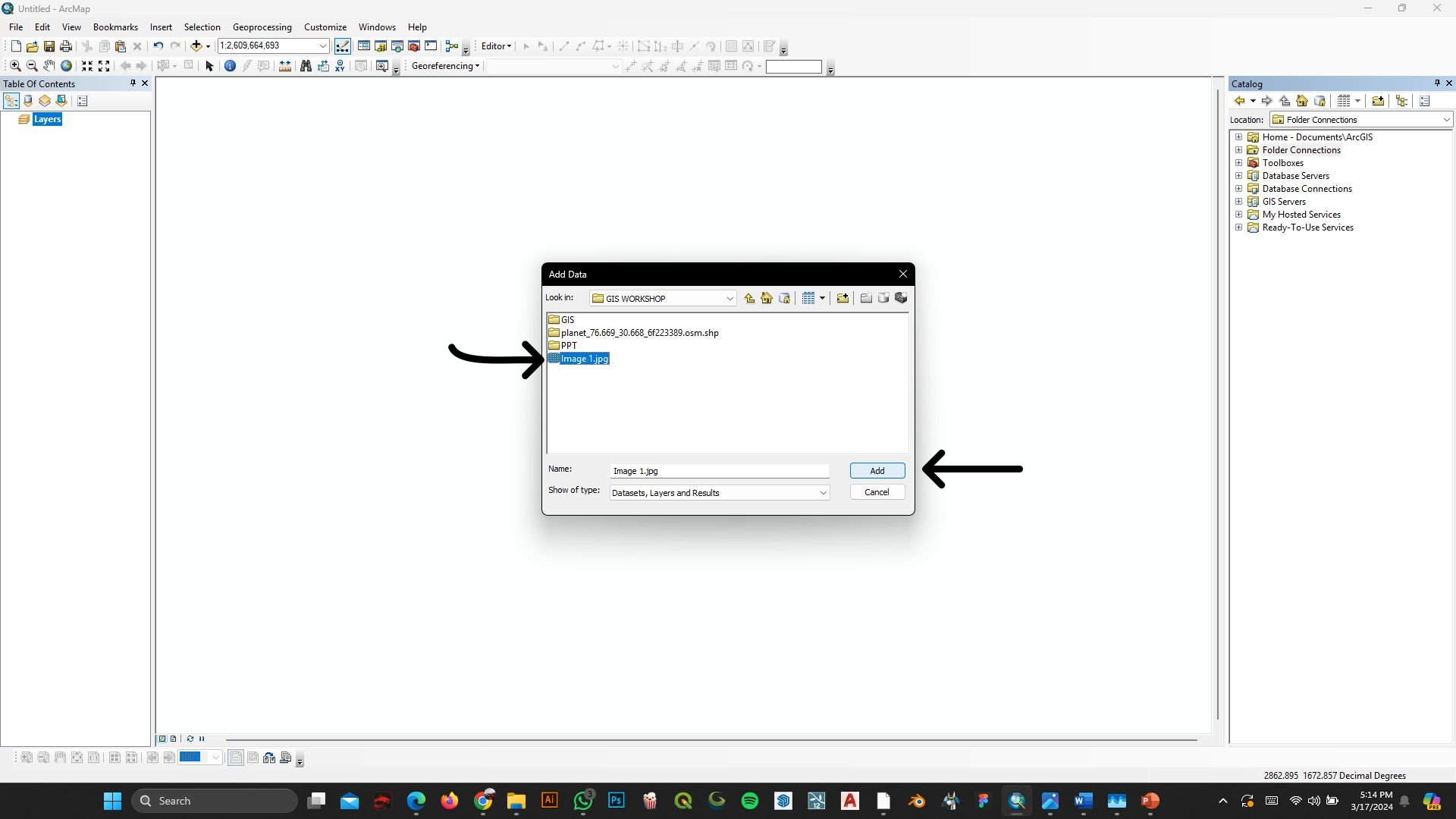
Catalog

Location: Folder Connections

- Home - Documents\ArcGIS
- Folder Connections**
- Toolboxes
- Database Servers
- Database Connections
- GIS Servers
- My Hosted Services
- Ready-To-Use Services



A row of small icons for map navigation and editing, including a search icon, a refresh icon, and a help icon.



Add Data

Look in: GIS WORKSHOP

- GIS
- planet_76.669_30.668_6f223389.osm.shp
- PPT
- Image 1.jpg**

Name: Image 1.jpg

Show of type: Datasets, Layers and Results

- Catalog**
- Location: Folder Connections
- Home - Documents/ArcGIS
 - Folder Connections
 - Toolboxes
 - Database Servers
 - Database Connections
 - GIS Servers
 - My Hosted Services
 - Ready-To-Use Services

Layers

Location: Home - GIS WORKSHOP

- Home - GIS WORKSHOP
- Folder Connections
- Toolboxes
- Database Servers
- Database Connections
- GIS Servers
- My Hosted Services
- Ready-To-Use Services

Unknown Spatial Reference

The following data sources you added are missing spatial reference information. This data can be drawn in ArcMap, but cannot be projected:

Image 1.jpg

Don't warn me again in this session
 Don't warn me again ever

OK



Layers

- Image 1.jpg
- RGB
 - Red: Band_1
 - Green: Band_2
 - Blue: Band_3



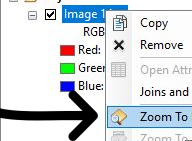
Location: Folder Connections

- Home - Documents\ArcGIS
- Folder Connections
- Toolboxes
- Database Servers
- Database Connections
- GIS Servers
- My Hosted Services
- Ready-To-Use Services

Table Of Contents

Layers

- Image 1
- RGB
- Red
- Green
- Blue



- Copy
- Remove
- Open Attribute Table
- Joins and Relates
- Zoom To Layer
- Zoom To Make Visible
- Zoom To Layer
- Zoom To Layer
- Zoom to the extent of the selected layer
- Visible S
- Data
- Edit Features
- Save As Layer File...
- Create Layer Package...
- Properties...



Catalog

Location: Home - GIS WORKSHOP

- Home - GIS WORKSHOP
- Folder Connections
- Toolboxes
- Database Servers
- Database Connections
- GIS Servers
- My Hosted Services
- Ready-To-Use Services

Table Of Contents

Layers

- Image 1.jpg
- RGB
 - Red: Band_1
 - Green: Band_2
 - Blue: Band_3



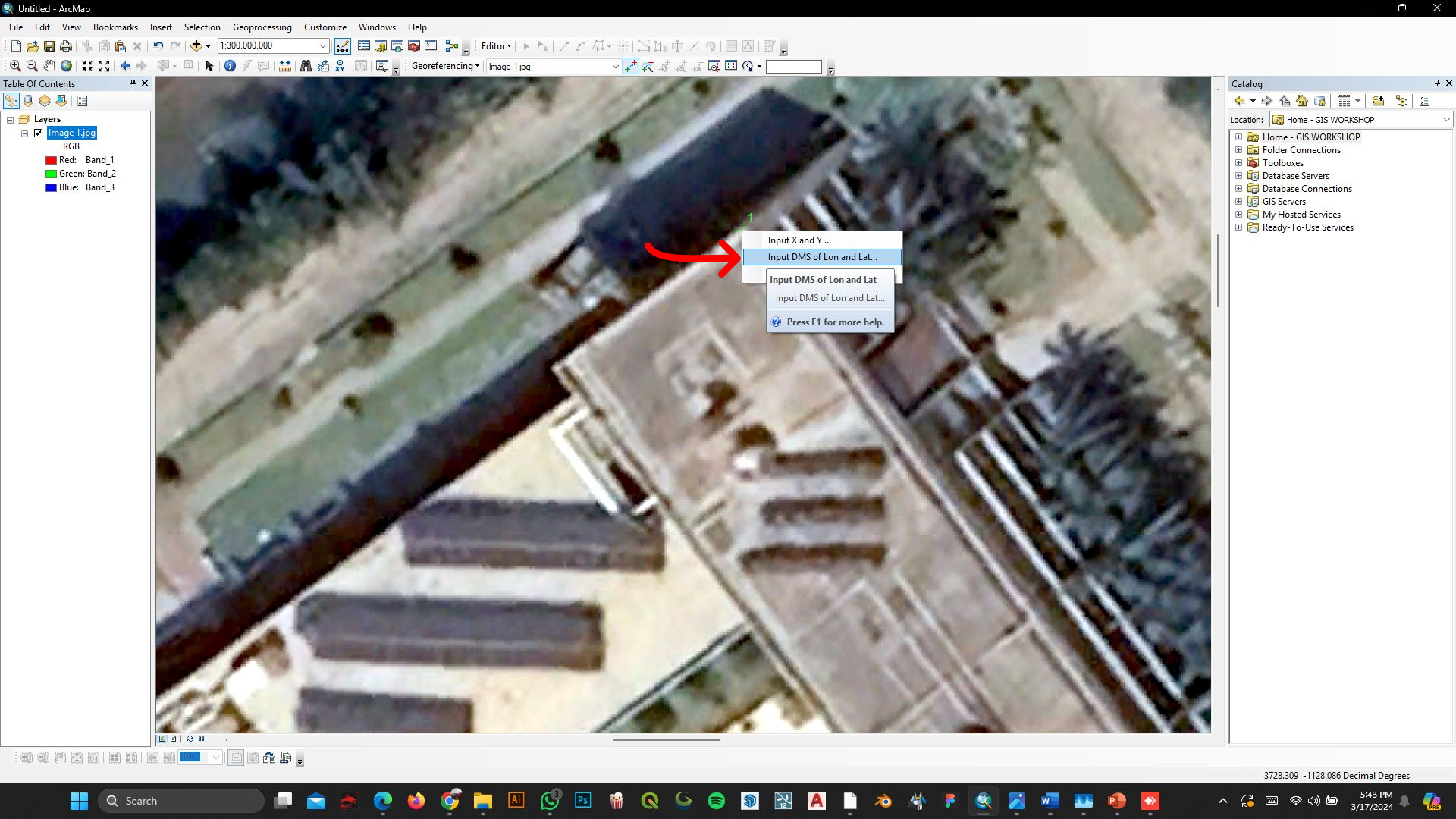
Add Control Points

Select control points from the source (ungeoreferenced) layer to the georeferenced map coordinate layer. To enter target coordinates manually, select the point on the source dataset first, then right-click and select "Input X and Y" and enter the x and y target locations into the dialog

Catalog

Location: Home - GIS WORKSHOP

- Home - GIS WORKSHOP
- Folder Connections
- Toolboxes
- Database Servers
- Database Connections
- GIS Servers
- My Hosted Services
- Ready-To-Use Services



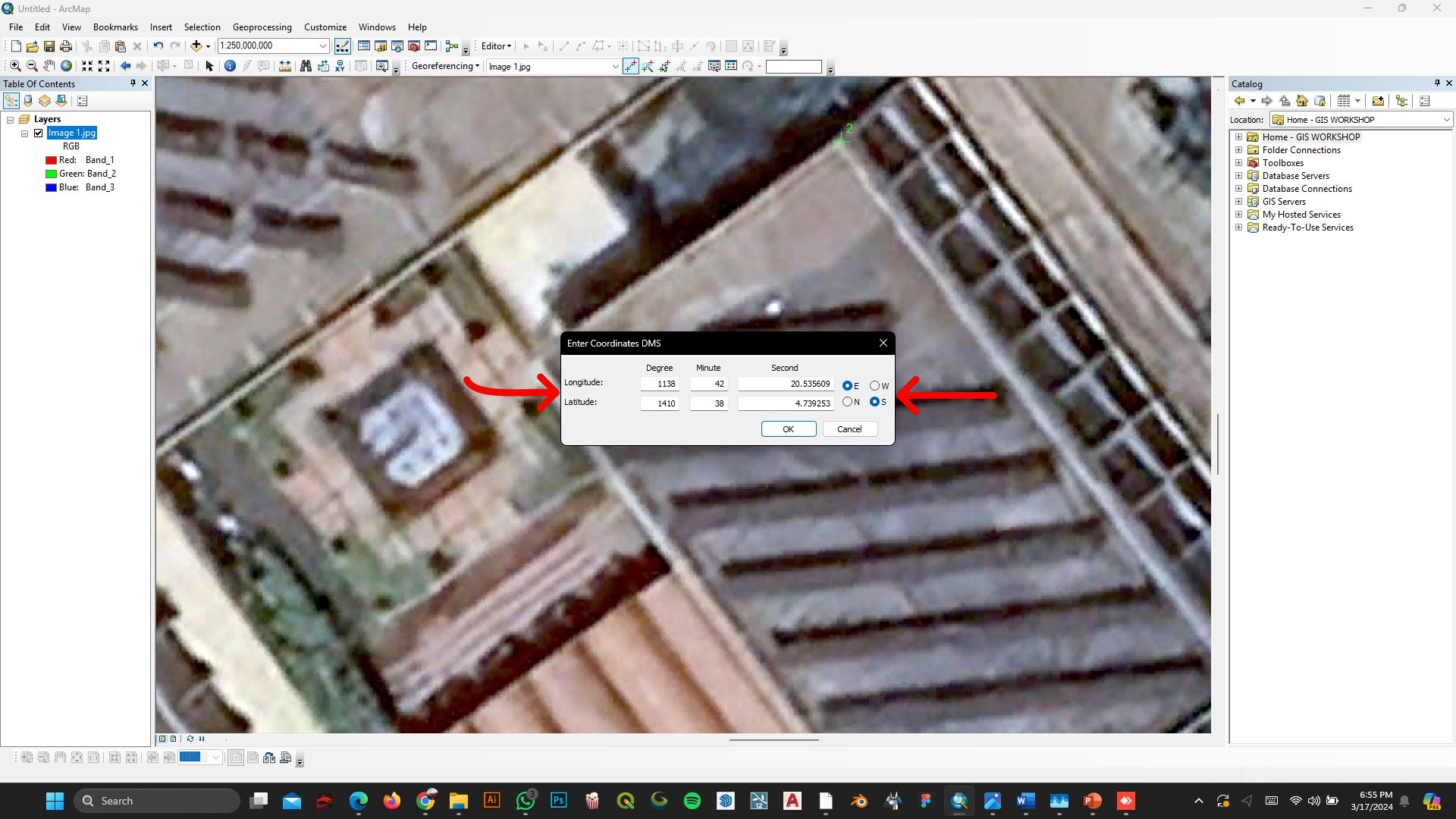
Layers

- Image 1.jpg
- RGB
 - Red: Band_1
 - Green: Band_2
 - Blue: Band_3

Location: Home - GIS WORKSHOP

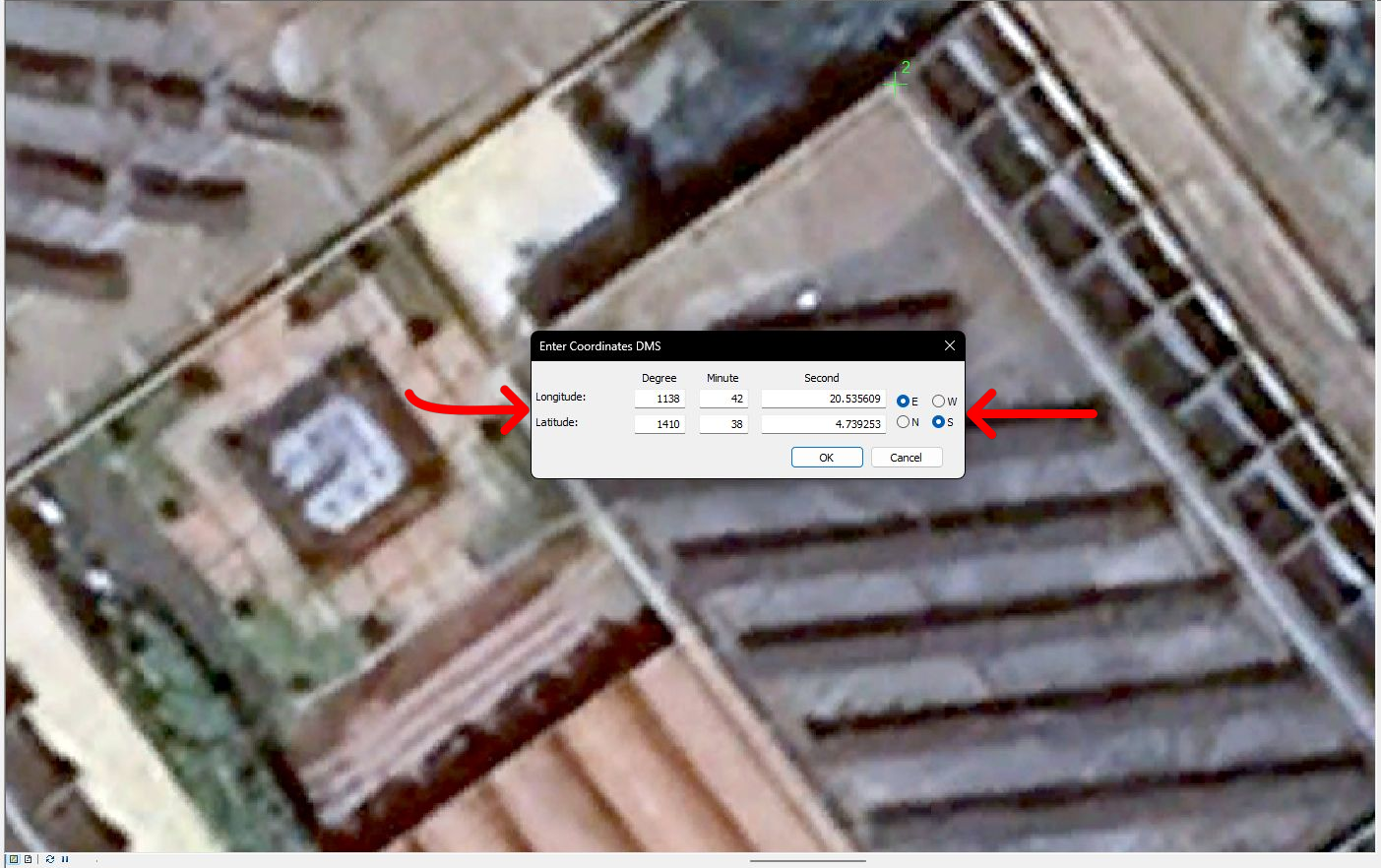
- Home - GIS WORKSHOP
 - Folder Connections
 - Toolboxes
 - Database Servers
 - Database Connections
 - GIS Servers
 - My Hosted Services
 - Ready-To-Use Services

- Input X and Y ...
- Input DMS of Lon and Lat...**
- Input DMS of Lon and Lat
 - Input DMS of Lon and Lat...
- Press F1 for more help.



Layers

- Image 1.jpg
- RGB
 - Red: Band_1
 - Green: Band_2
 - Blue: Band_3



Enter Coordinates DMS

Longitude:	Degree	Minute	Second		
	1138	42	20.535609	<input checked="" type="radio"/> E	<input type="radio"/> W
Latitude:	Degree	Minute	Second		
	1410	38	4.739253	<input type="radio"/> N	<input checked="" type="radio"/> S

OK Cancel

Catalog

Location: Home - GIS WORKSHOP

- Home - GIS WORKSHOP
- Folder Connections
- Toolboxes
- Database Servers
- Database Connections
- GIS Servers
- My Hosted Services
- Ready-To-Use Services



Table Of Contents

Layers

- Image 1.jpg
 - RGB
 - Red: [Red swatch]
 - Green: [Green swatch]
 - Blue: [Blue swatch]

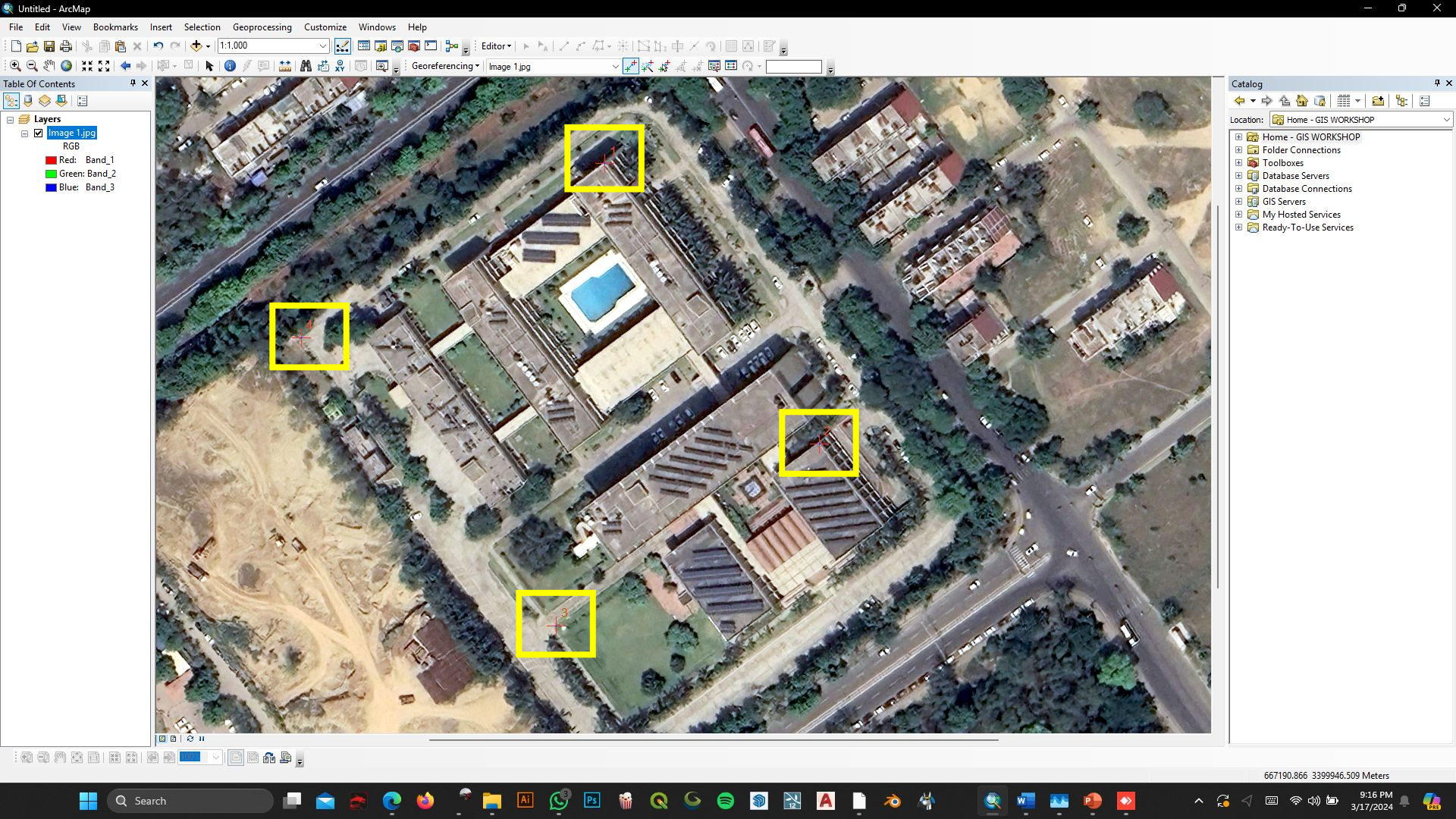
- Copy
- Remove
- Open Attribute Table
- Joins and Relates
- Zoom To Layer
- Zoom To Layer
 - Zoom to the extent of the selected layer
- Data
- Edit Features
- Save As Layer File...
- Create Layer Package...
- Properties...

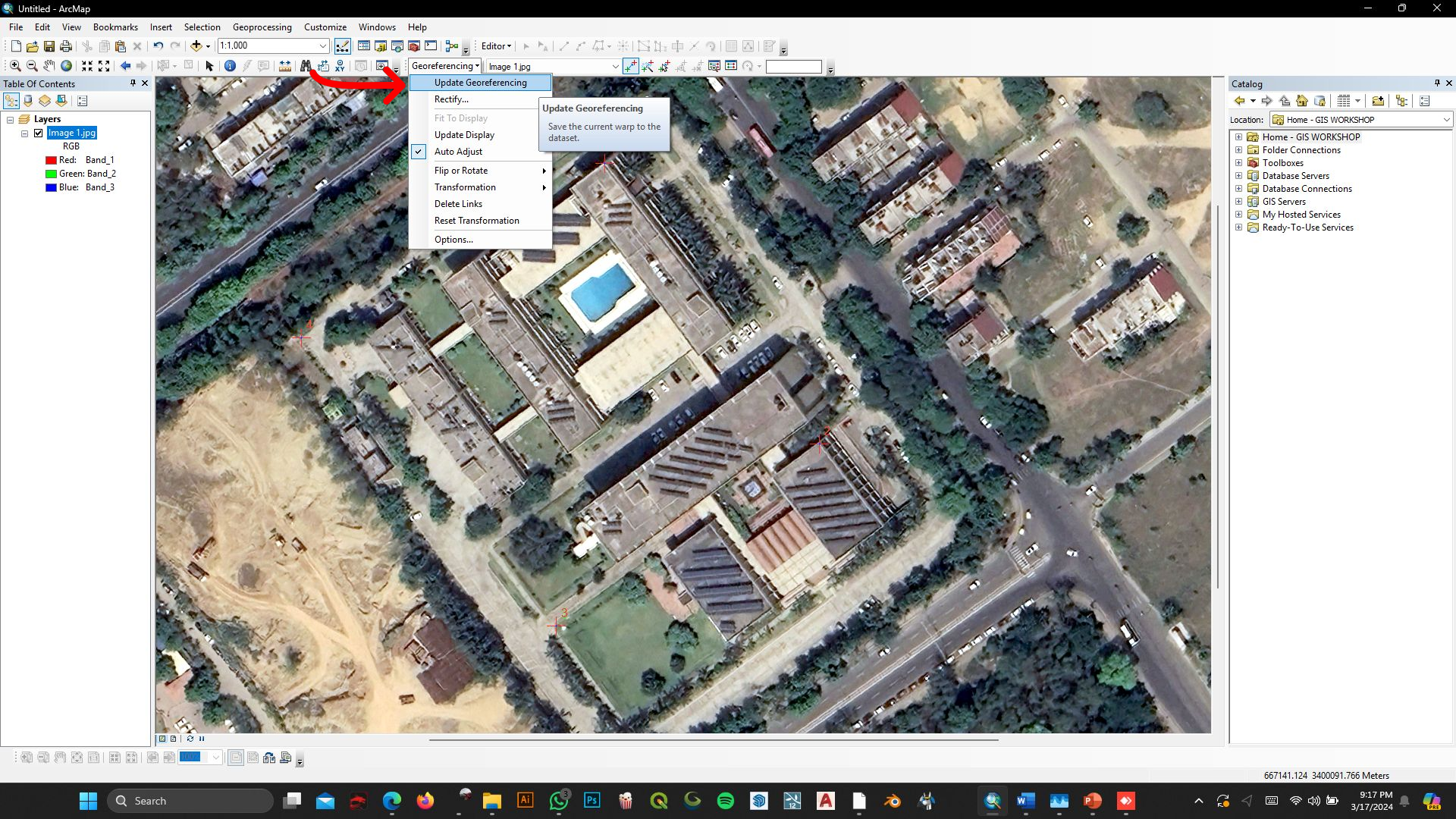
Catalog

Location: Home - GIS WORKSHOP

- Home - GIS WORKSHOP
 - Folder Connections
 - Toolboxes
 - Database Servers
 - Database Connections
 - GIS Servers
 - My Hosted Services
 - Ready-To-Use Services







Layers

- RGB
- Red: Band_1
- Green: Band_2
- Blue: Band_3

- Update Georeferencing
- Rectify...
- Fit To Display
- Update Display
- Auto Adjust
- Flip or Rotate
- Transformation
- Delete Links
- Reset Transformation
- Options...

Update Georeferencing
Save the current warp to the dataset.

Location: Home - GIS WORKSHOP

- Home - GIS WORKSHOP
- Folder Connections
- Toolboxes
- Database Servers
- Database Connections
- GIS Servers
- My Hosted Services
- Ready-To-Use SERVICES

▼ Search

Chandigarh, India Search

ex: Hotels near JFK

Get Directions History

Chandigarh

Places

Layers

Map Options Polygon Maximum (8192x4883) Save Image...



Search

Chandigarh, India Search

ex: Hotels near JFK

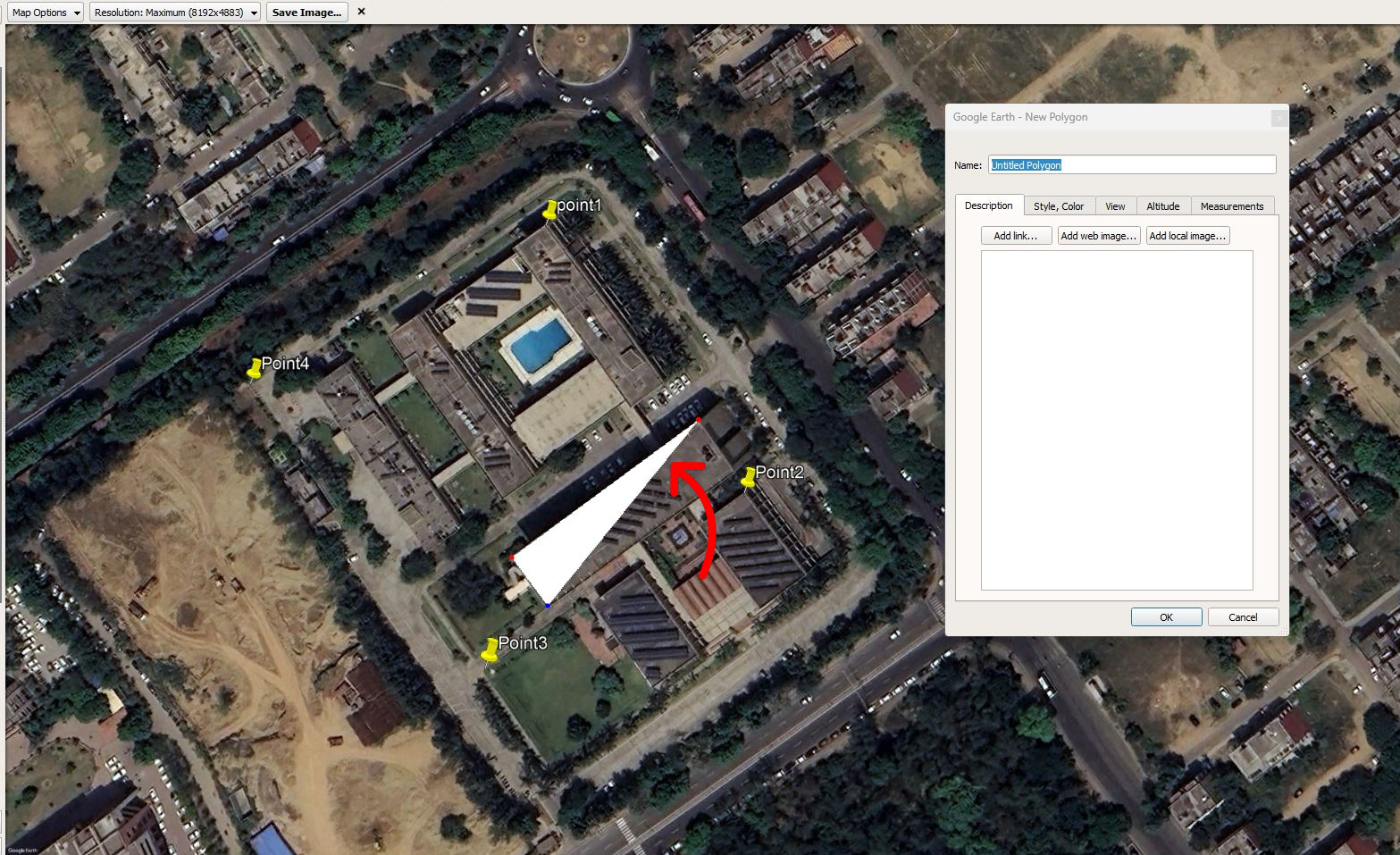
Get Directions History

Chandigarh

Icons for print, share, and other actions.

Places
Layers

Map Options Resolution: Maximum (8192x4883) Save Image...



Google Earth - New Polygon

Name: Untitled Polygon

Description	Style, Color	View	Altitude	Measurements
Add link... Add web image... Add local image...				

OK Cancel

Search

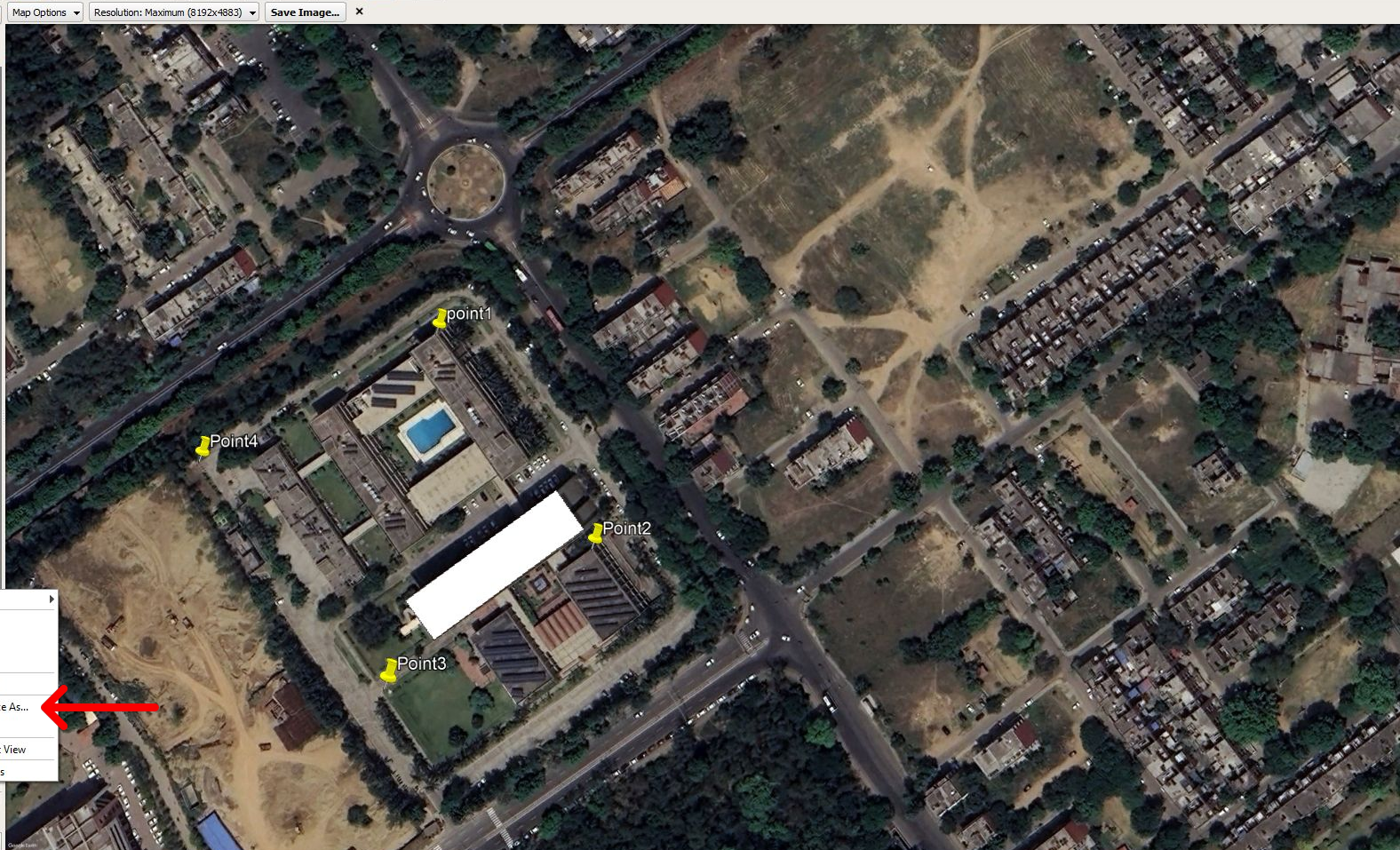
Chandigarh, India

ex: Hotels near JFK

Get Directions History

Chandigarh

Map Options Resolution: Maximum (8192x4883) Save Image...



- Add
- Cut
- Copy
- Delete
- Rename
- Save Place As...
- Email...
- Snapshot View
- Properties



Places

- Point3
- Point4
- Test

Temporary Places

Layers

Save file...

This PC > T A Z E R (Z) > GIS WORKSHOP

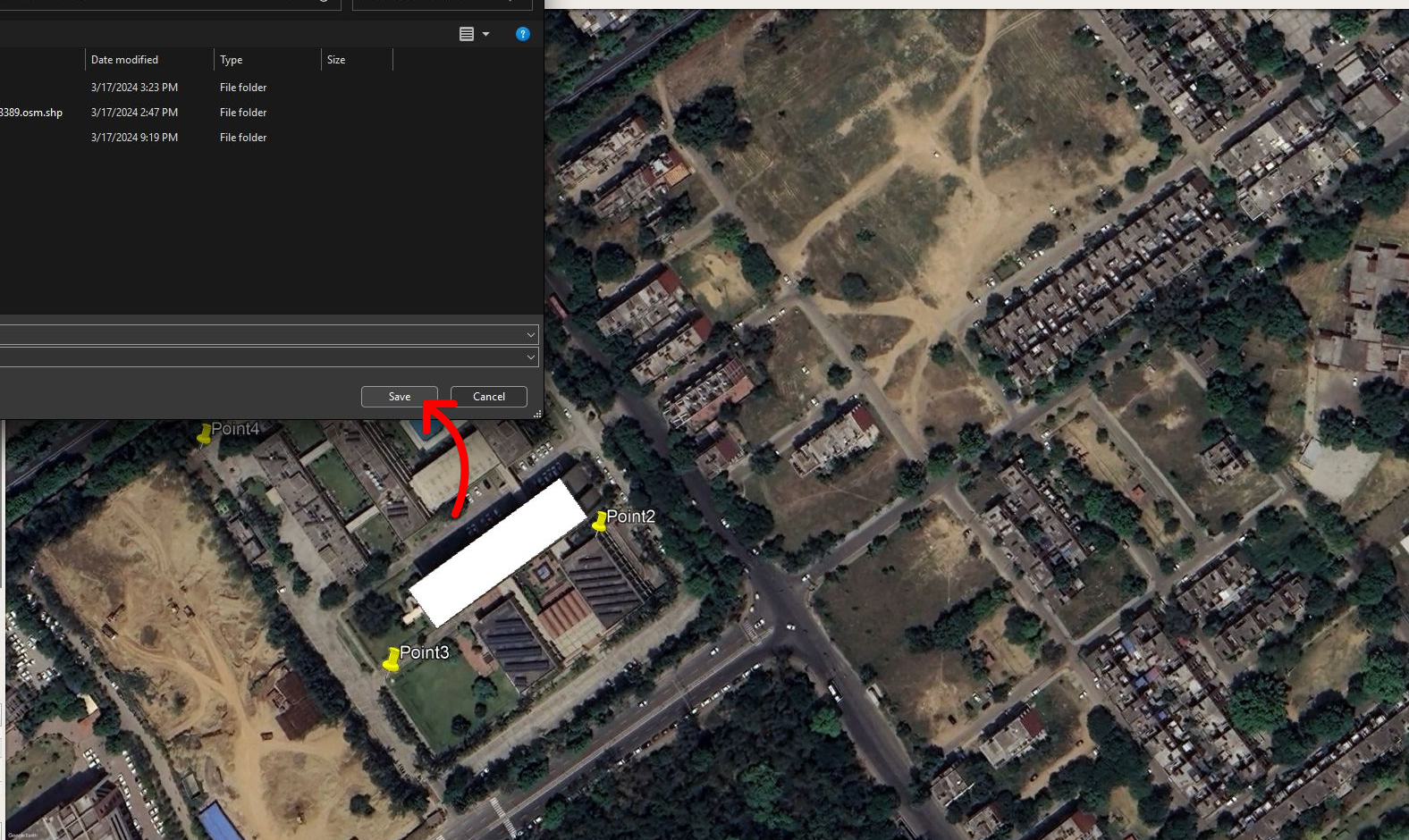
Search GIS WORKSHOP

Organize	New folder	Name	Date modified	Type	Size
Home		GIS	3/17/2024 3:23 PM	File folder	
Gallery		planet_76.669_30.668_6f223389.osm.shp	3/17/2024 2:47 PM	File folder	
OneDrive - Persi		PPT	3/17/2024 9:19 PM	File folder	

File name: Test

Save as type: Kmz (*.kmz)

Save Cancel



Places

- Point3
- Point4
- Test
- Temporary Places



Table Of Contents

- Layers
- Image 1.jpg
- RGB
- Red: Band_1
- Green: Band_2
- Blue: Band_3

ArcToolbox

Open the ArcToolbox window so you can access geoprocessing tools and toolboxes.

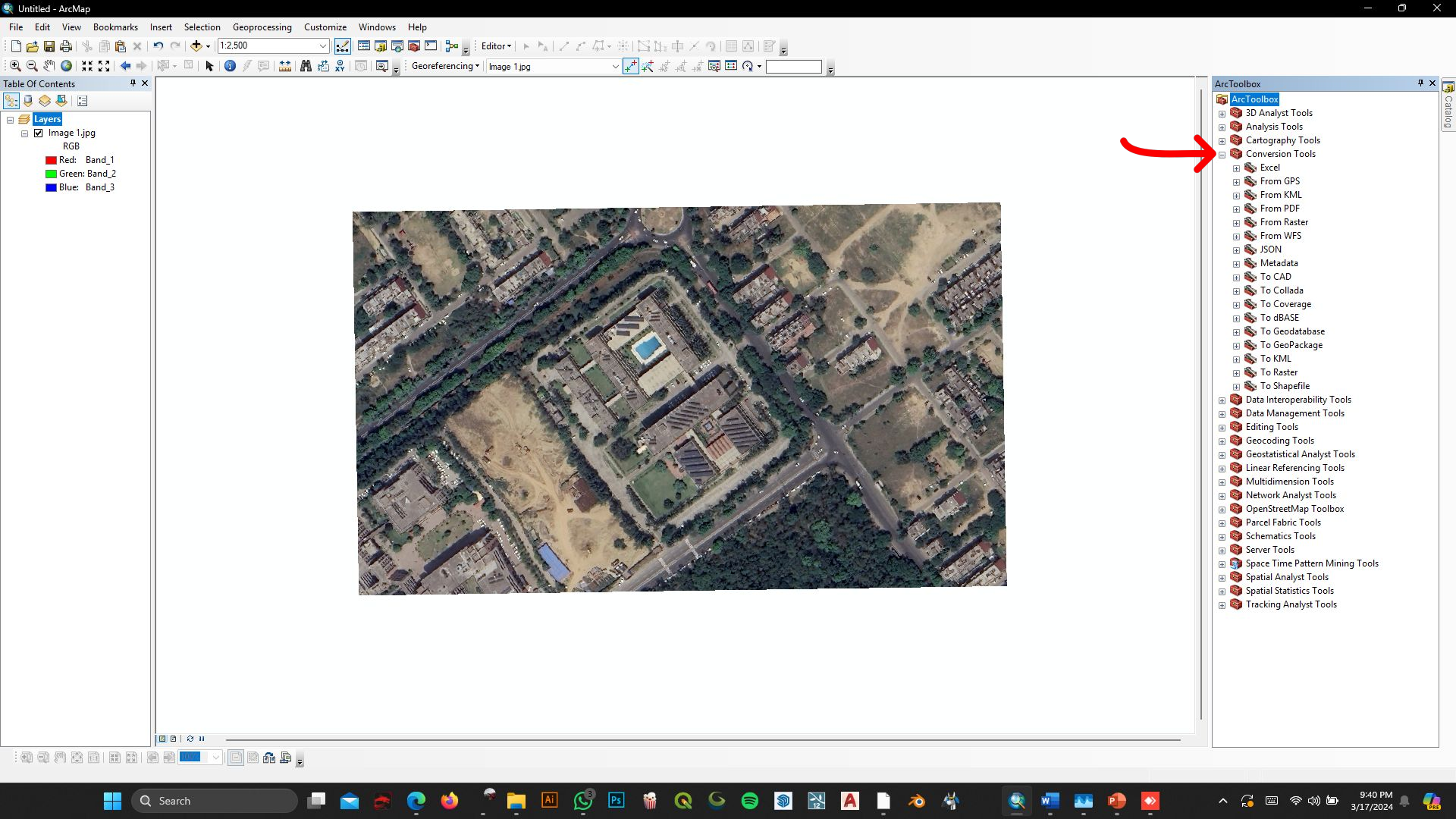
Press F1 for more help.

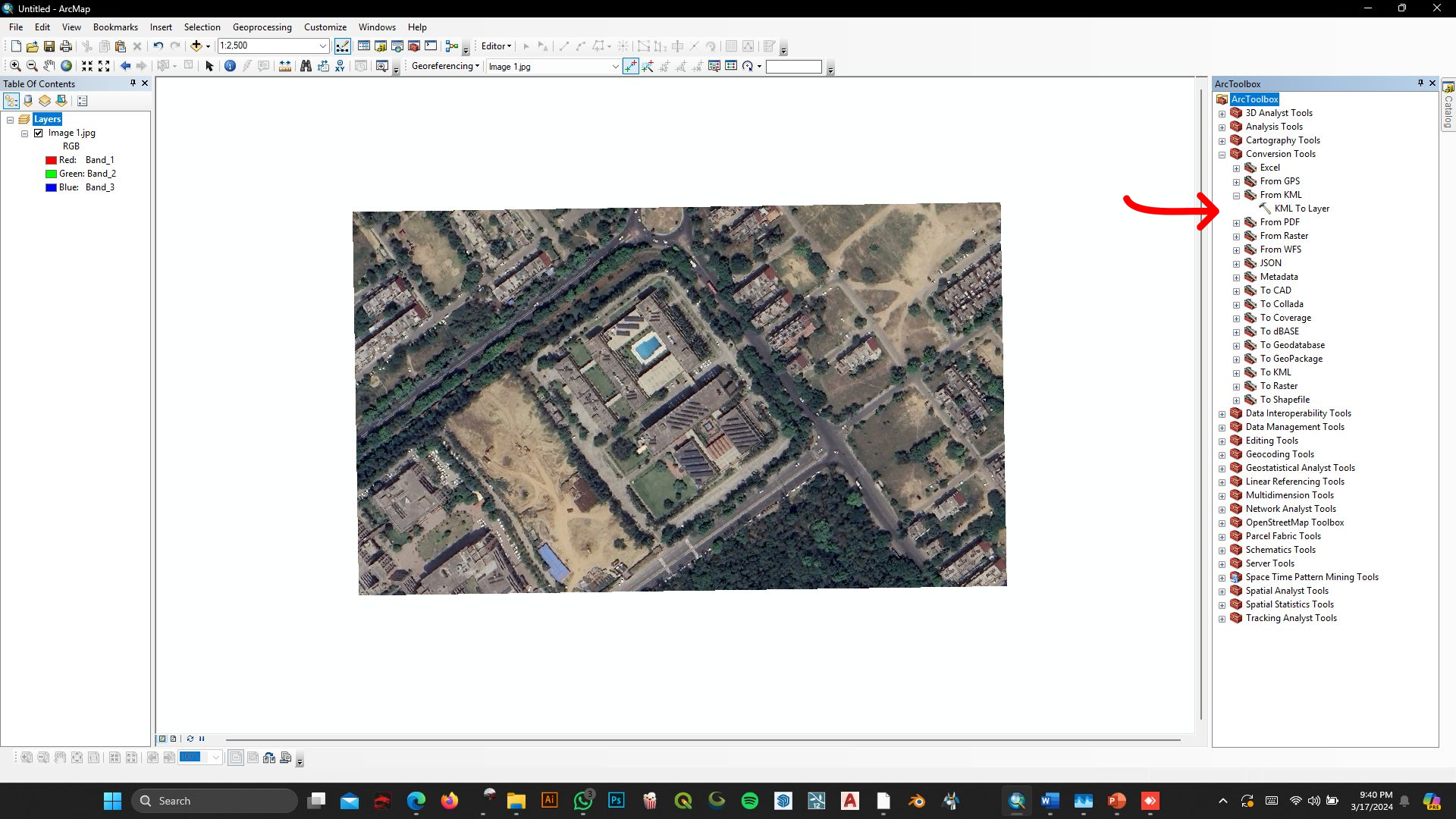


Catalog

Location: Folder Connections

- Home - GIS WORKSHOP
- Folder Connections
- Toolboxes
- Database Servers
- Database Connections
- GIS Servers
- My Hosted Services
- Ready-To-Use Services





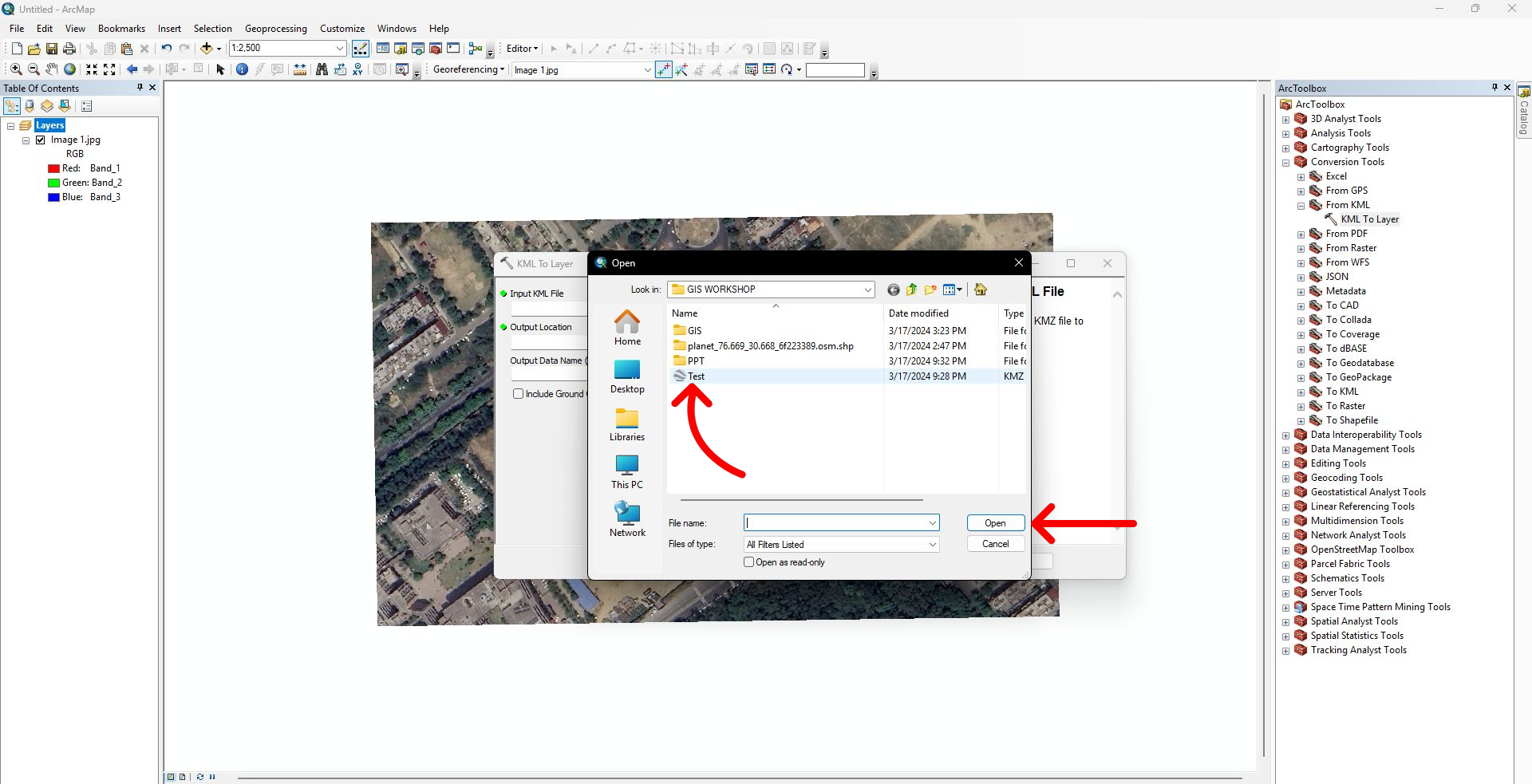
Layers

- Image 1.jpg
 - RGB
 - Red: Band_1
 - Green: Band_2
 - Blue: Band_3



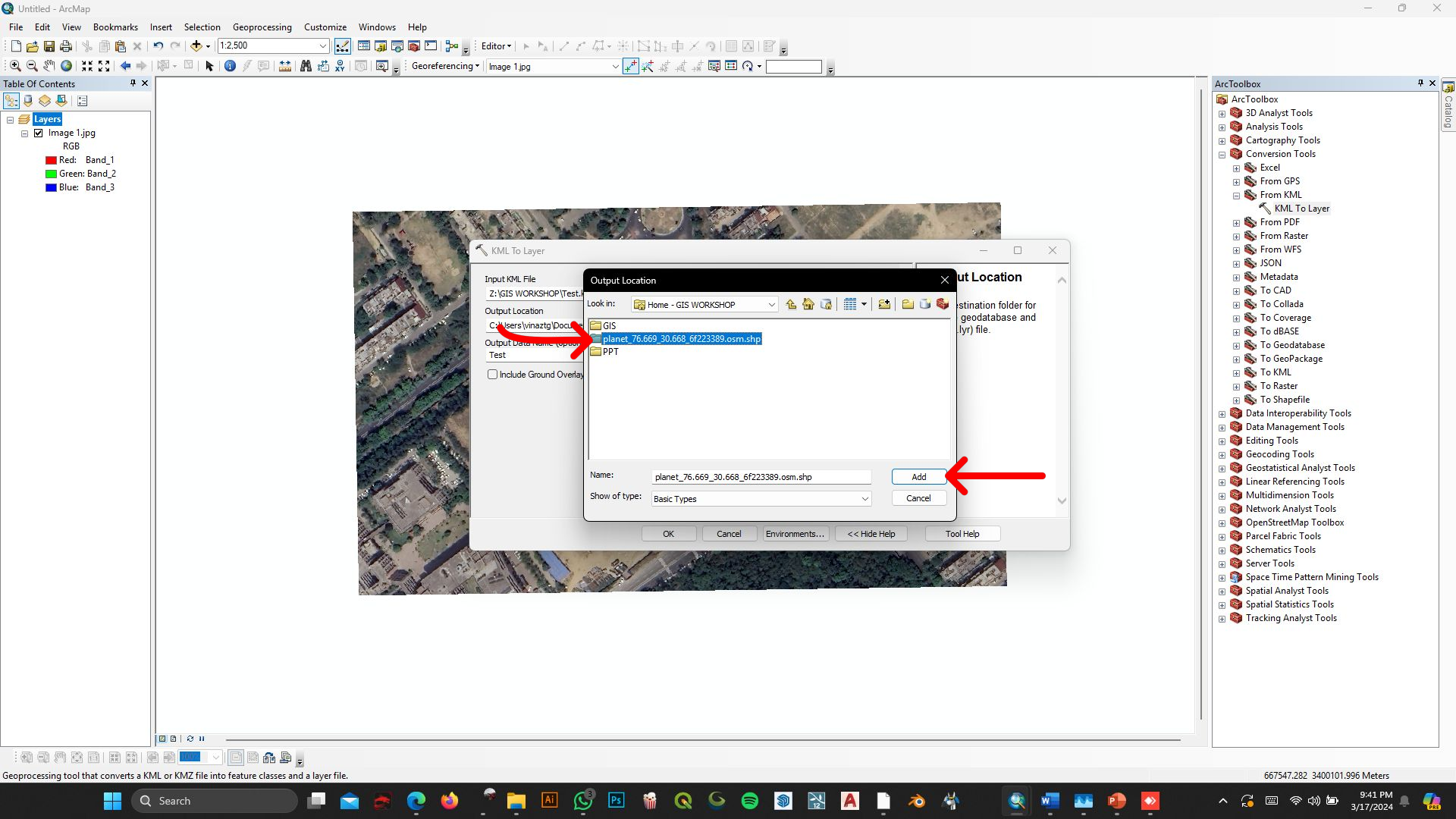
- ArcToolbox
- 3D Analyst Tools
- Analysis Tools
- Cartography Tools
- Conversion Tools
- Excel
- From GPS
- From KML
- KML To Layer
- From PDF
- From Raster
- From WFS
- JSON
- Metadata
- To CAD
- To Collada
- To Coverage
- To dBASE
- To Geodatabase
- To GeoPackage
- To KML
- To Raster
- To Shapefile
- Data Interoperability Tools
- Data Management Tools
- Editing Tools
- Geocoding Tools
- Geostatistical Analyst Tools
- Linear Referencing Tools
- Multidimension Tools
- Network Analyst Tools
- OpenStreetMap Toolbox
- Parcel Fabric Tools
- Schematics Tools
- Server Tools
- Space Time Pattern Mining Tools
- Spatial Analyst Tools
- Spatial Statistics Tools
- Tracking Analyst Tools





Geoprocessing tool that converts a KML or KMZ file into feature classes and a layer file.

667547.282 3400101.996 Meters



KML To Layer

Input KML File
Z:\GIS WORKSHOP\TEST\planet_76.669_30.668_6f223389.osm.shp

Output Location
C:\Users\vinaztg\Documents\planet_76.669_30.668_6f223389.osm.shp

Output Data Name (optional)
Test

Include Ground Overlay

Output Location

Look in: Home - GIS WORKSHOP

- GIS
- planet_76.669_30.668_6f223389.osm.shp
- PPT

Name: planet_76.669_30.668_6f223389.osm.shp

Show of type: Basic Types

Add Cancel

OK Cancel Environments... << Hide Help Tool Help

- ArcToolbox
- ArcToolbox
 - 3D Analyst Tools
 - Analysis Tools
 - Cartography Tools
 - Conversion Tools
 - Excel
 - From GPS
 - From KML
 - KML To Layer
 - From PDF
 - From Raster
 - From WFS
 - JSON
 - Metadata
 - To CAD
 - To Collada
 - To Coverage
 - To dBASE
 - To Geodatabase
 - To Geopackage
 - To KML
 - To Raster
 - To Shapefile
 - Data Interoperability Tools
 - Data Management Tools
 - Editing Tools
 - Geocoding Tools
 - Geostatistical Analyst Tools
 - Linear Referencing Tools
 - Multidimension Tools
 - Network Analyst Tools
 - OpenStreetMap Toolbox
 - Parcel Fabric Tools
 - Schematics Tools
 - Server Tools
 - Space Time Pattern Mining Tools
 - Spatial Analyst Tools
 - Spatial Statistics Tools
 - Tracking Analyst Tools

Geoprocessing tool that converts a KML or KMZ file into feature classes and a layer file.

667547.282 3400101.996 Meters

9:41 PM
3/17/2024

Table Of Contents

- Layers
 - test
 - Polylines
 - SymbolID 0
 - Image 1.jpg
 - RGB
 - Red: Band_1
 - Green: Band_2
 - Blue: Band_3



ArcToolbox

- ArcToolbox
 - 3D Analyst Tools
 - Analysis Tools
 - Cartography Tools
 - Conversion Tools
 - Excel
 - From GPS
 - From KML
 - KML To Layer
 - From PDF
 - From Raster
 - From WFS
 - JSON
 - Metadata
 - To CAD
 - To Collada
 - To Coverage
 - To dBASE
 - To Geodatabase
 - To GeoPackage
 - To KML
 - To Raster
 - To Shapefile
 - Data Interoperability Tools
 - Data Management Tools
 - Editing Tools
 - Geocoding Tools
 - Geostatistical Analyst Tools
 - Linear Referencing Tools
 - Multidimension Tools
 - Network Analyst Tools
 - OpenStreetMap Toolbox
 - Parcel Fabric Tools
 - Schematics Tools
 - Server Tools
 - Space Time Pattern Mining Tools
 - Spatial Analyst Tools
 - Spatial Statistics Tools
 - Tracking Analyst Tools

KML To Layer

Table Of Contents

- Layers
 - Test
 - Polygons
 - SymbolID

Symbol Selector

Search: All Styles Referenced Styles

vinaztg

122	Agri	Comme
Mix	Municipal Boundary	PSP
PUZ	PUZB	PUZG
Rec	Resi	Transp

Current Symbol

Fill Color:

Outline Width: 0.75

Outline Color:

Edit Symbol...

Save As... Reset

Style References...

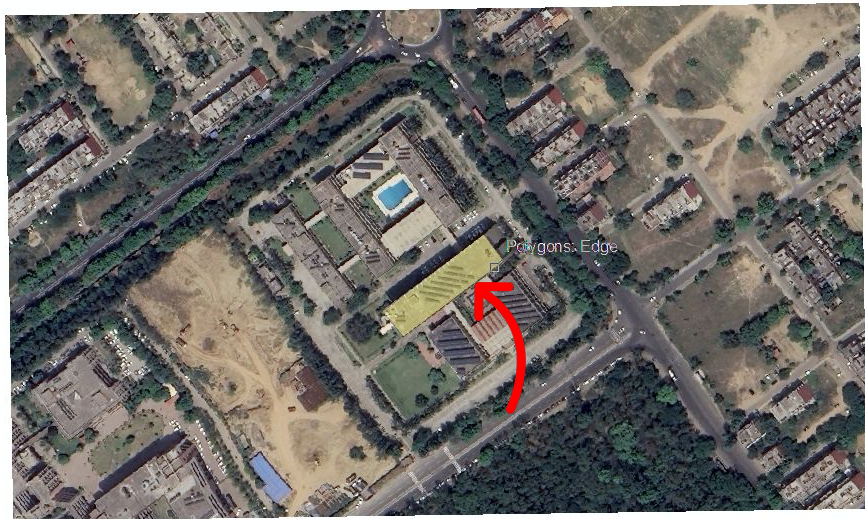
OK Cancel

ArcToolbox

- ArcToolbox
 - 3D Analyst Tools
 - Analysis Tools
 - Cartography Tools
 - Conversion Tools
 - Excel
 - From GPS
 - From KML
 - KML To Layer
 - From PDF
 - From Raster
 - From WFS
 - JSON
 - Metadata
 - To CAD
 - To Collada
 - To Coverage
 - To dBASE
 - To Geodatabase
 - To Geopackage
 - To KML
 - To Raster
 - To Shapefile
 - Data Interoperability Tools
 - Data Management Tools
 - Editing Tools
 - Geocoding Tools
 - Geostatistical Analyst Tools
 - Linear Referencing Tools
 - Multidimension Tools
 - Network Analyst Tools
 - OpenStreetMap Toolbox
 - Parcel Fabric Tools
 - Schematics Tools
 - Server Tools
 - Space Time Pattern Mining Tools
 - Spatial Analyst Tools
 - Spatial Statistics Tools
 - Tracking Analyst Tools

Table Of Contents

- Layers
 - Test
 - SymbolID
 - Image 1.jpg
 - RGB
 - Red: Band_1
 - Green: Band_2
 - Blue: Band_3



ArcToolbox

- ArcToolbox
 - 3D Analyst Tools
 - Analysis Tools
 - Cartography Tools
 - Conversion Tools
 - Excel
 - From GPS
 - From KML
 - KML To Layer
 - From PDF
 - From Raster
 - From WFS
 - JSON
 - Metadata
 - To CAD
 - To Collada
 - To Coverage
 - To dBASE
 - To Geodatabase
 - To GeoPackage
 - To KML
 - To Raster
 - To Shapefile
 - Data Interoperability Tools
 - Data Management Tools
 - Editing Tools
 - Geocoding Tools
 - Geostatistical Analyst Tools
 - Linear Referencing Tools
 - Multidimension Tools
 - Network Analyst Tools
 - OpenStreetMap Toolbox
 - Parcel Fabric Tools
 - Schematics Tools
 - Server Tools
 - Space Time Pattern Mining Tools
 - Spatial Analyst Tools
 - Spatial Statistics Tools
 - Tracking Analyst Tools